

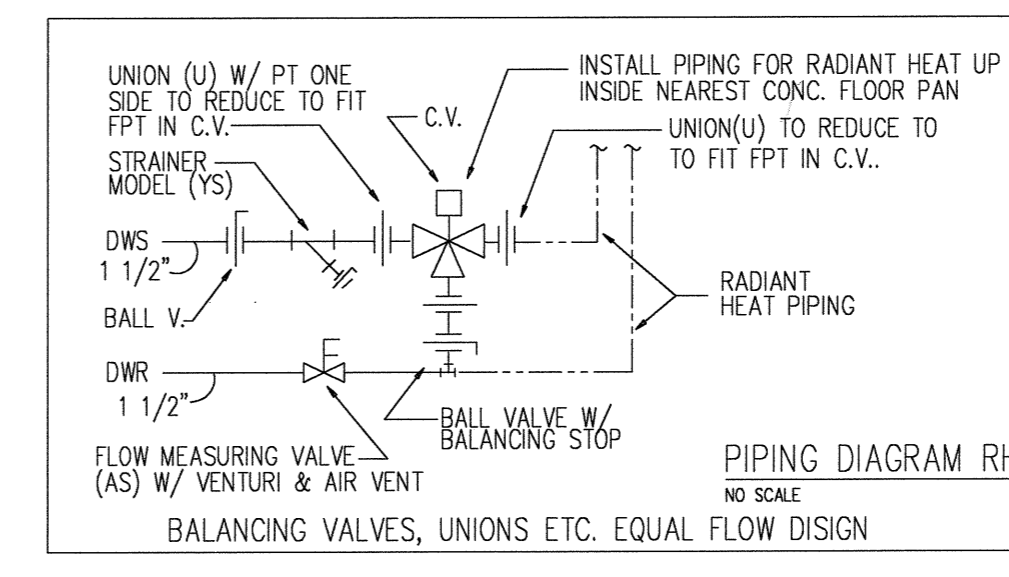
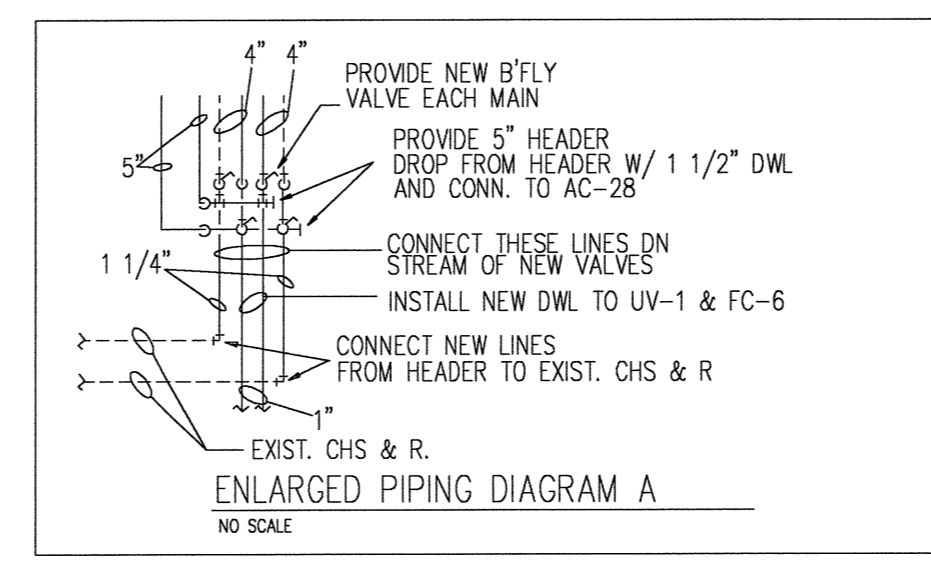
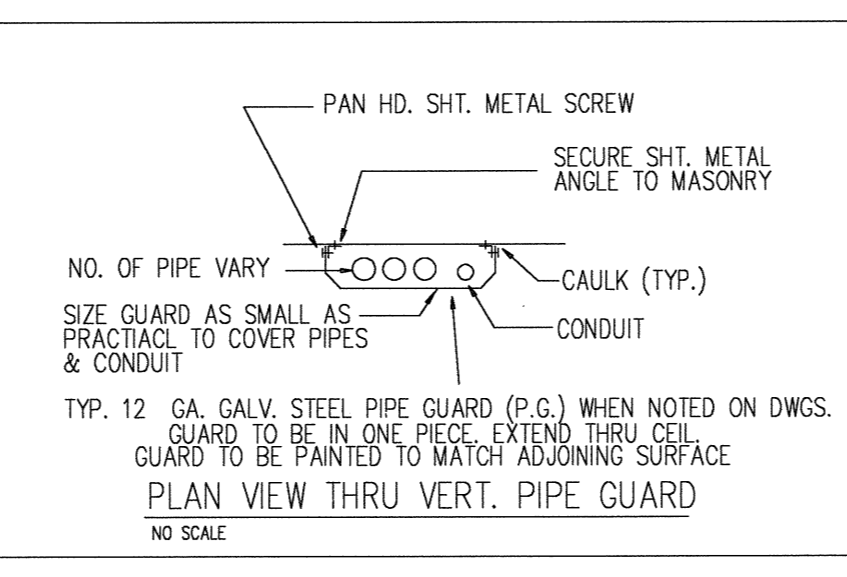
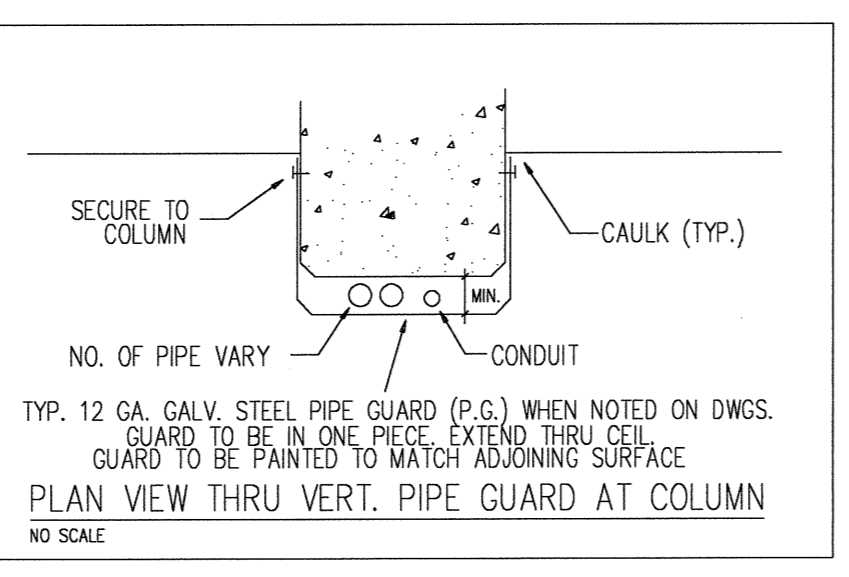
PARTIAL FIRST FLOOR PLAN - MECHANICAL
 SCALE: 1/16" = 1'-0"

NOTES:

AS BUILT NOTE:
 ALL PIPING TO UV'S ON FIRST FLOOR IS ON THE RIGHT SIDE WHEN FACING UNIT.

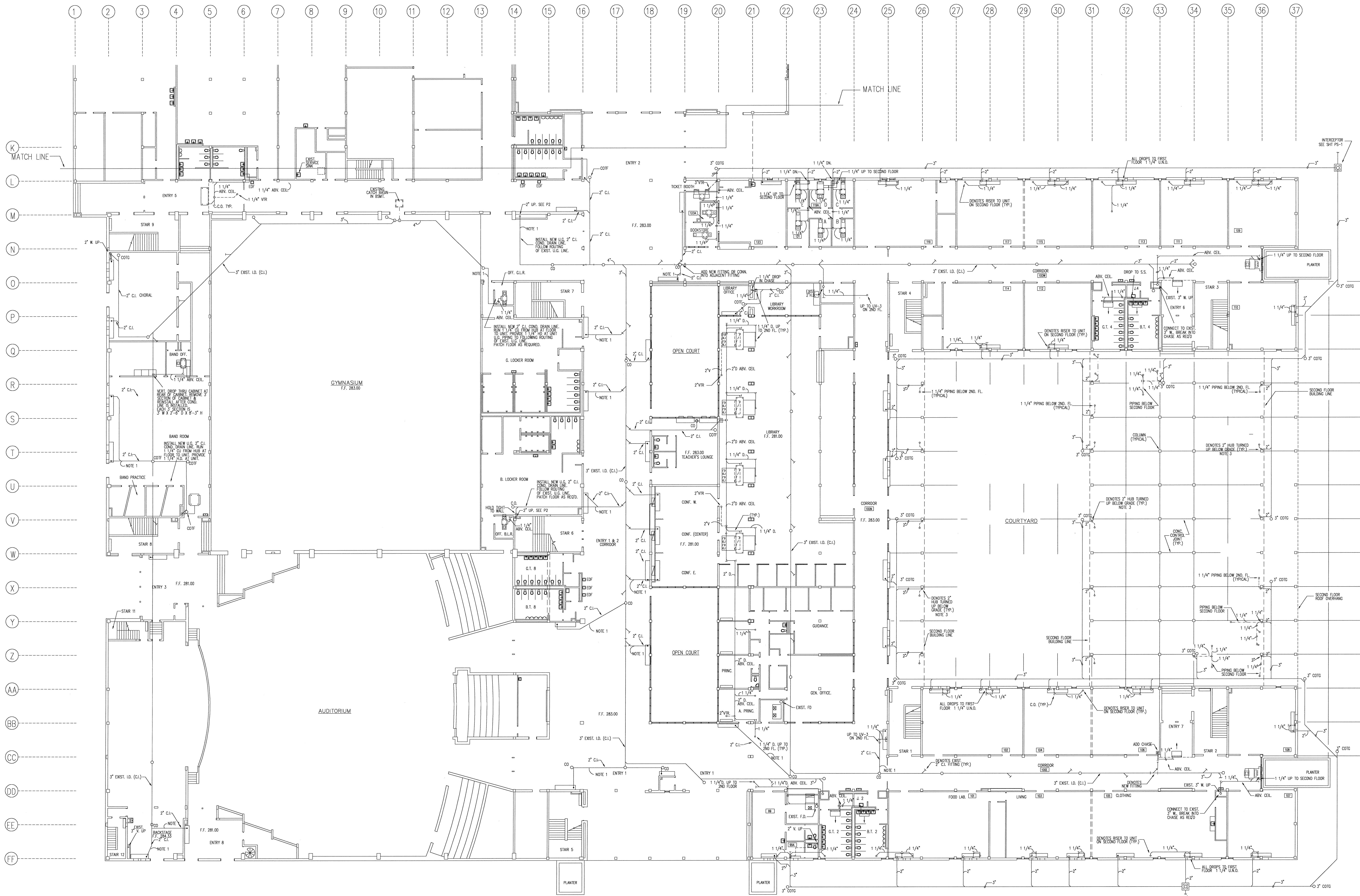
LEGEND

- DENOTES UNINSULATED EXISTING PIPING BENEATH SECOND FLOOR TO BE REUSED FOR RADIANT HEATING
- - - DENOTES EXISTING CHW PIPING TO BE REUSED AS IS UNLESS NOTED OTHERWISE. PIPING SERVES SECOND FLOOR.
- DENOTES NEW DWG. LINE.
- △ DENOTES (4) 1/2" RUNOUTS
- ⊕ DENOTES TEE & ELBOW CONNECTION AT MAN
- ⊕ DENOTES EXIST. CHW PIPING. ALL EXIST. RUNOUTS 1" UNLESS NOTED OTHERWISE
- DENOTES WHERE EXISTING CHW PIPING RISES TO SECOND FLOOR UNITS



NOTE:

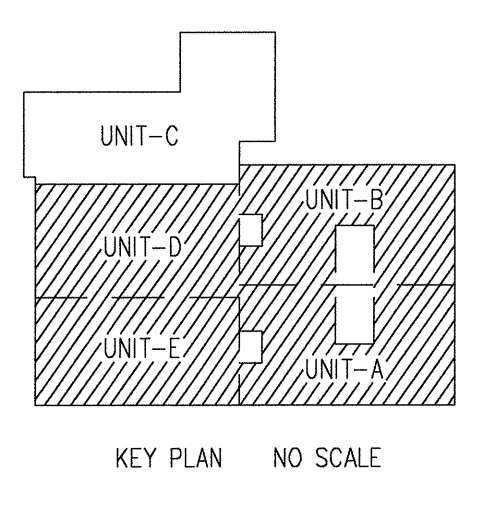
- INSTALL NEW 2 PIPE UNIT VENTILATORS, FAN COILS, LOUVERS ETC. IN LOCATION SHOWN ABOVE.
- INSTALL NEW OVERHEAD PIPING TO REPLACE UNDERGROUND PIPING WHICH WAS ABANDONED.
- MUCH OF THE NEW PIPING IS SHOWN IN SAME LOCATION AS THE HWS & HWR PIPING WHICH WAS REMOVED. IF AFTER THE CEILING ARE REMOVED A MORE ADVANTAGEOUS LOCATION IS FOUND, CONTRACTOR MAY CHANGE LOCATION SUBJECT TO APPROVAL OF ENGINEER.
- EXACT LOCATION OF GOOSENECKS & HOODS MAY VARY TO FIT IN CONC. PAN ROOF. OFFSET DUCT AS REQUIRED.
- ALL CHASES ARE MASONRY UNLESS NOTED OTHERWISE.
- ADD MANUAL AIR VENTS AT ALL HIGH POINTS OF PIPING.
- DURING DEMOLITION WHEN IT IS NOTED FOR AN ABANDONED HVAC PIPE TO BE CAPPED, IT MAY BE CAPPED WITH SCREWED CAP WELDING CAP OR A STEEL 14 GA. PLATE MAY BE WELDED OVER THE OPENING. AT POINT OF PIPE CLOSURE NO WOODS, OPENING ETC. SHALL REMAIN.
- ONE COURSE OF BRICK TO REMAIN ABOVE FLOOR FOR BOTTOM G.A. LOUVER TO REST ON. SIMILAR TO SECTION "A-A" ON SHIT M-4.

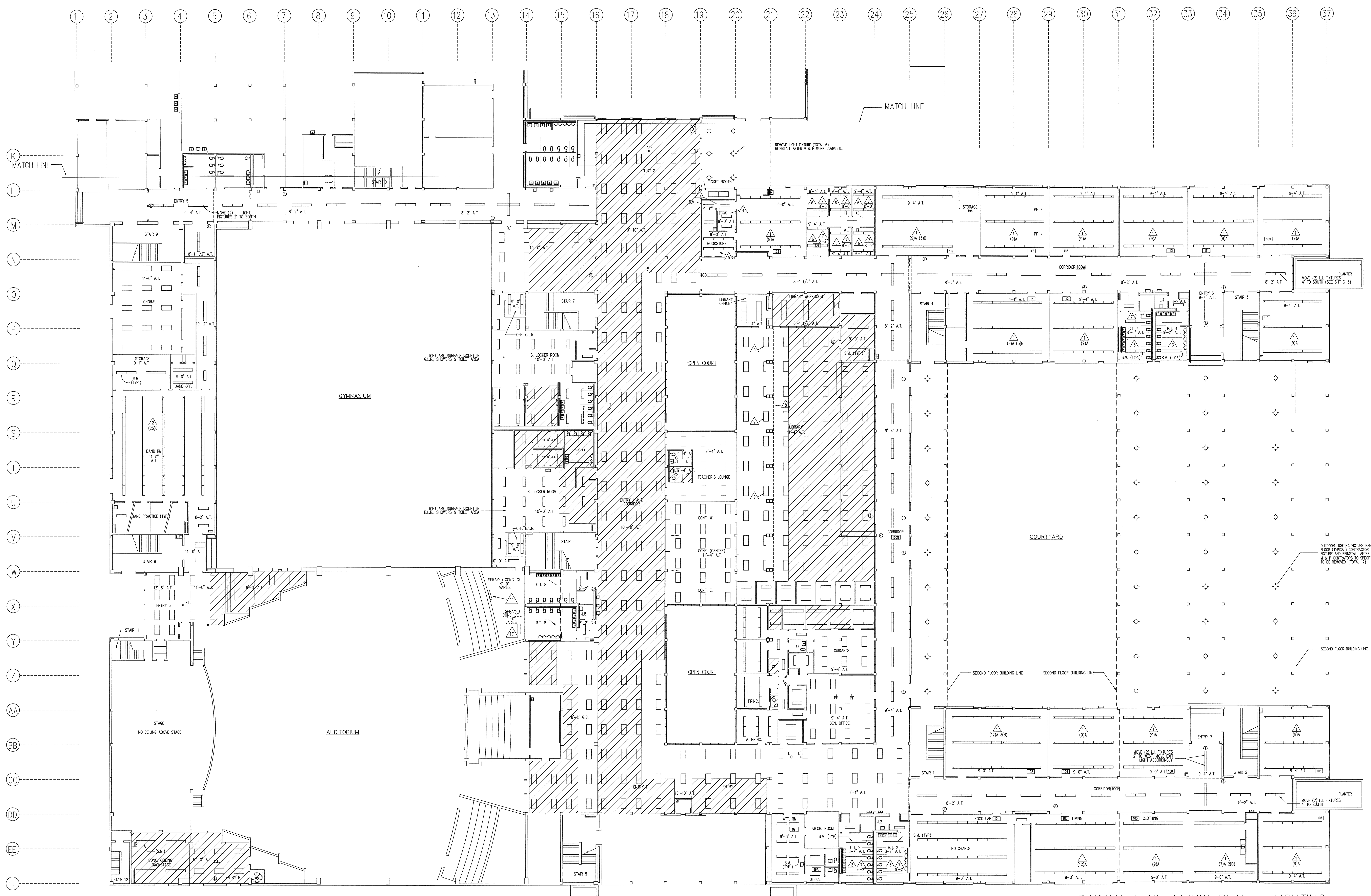


PARTIAL FIRST FLOOR PLAN - NEW CONDENSATE PIPING
SCALE: 1/16" = 1'-0"

SEISMIC REQUIREMENTS: (NEW & EXISTING DOMESTIC COLD, HOT WATER & CONDENSATE PIPING)
UNLESS NOTED OTHERWISE, ALL PIPING SHALL BE RESTRAINED IN ACCORDANCE WITH THE 1994 STANDARD BUILDING CODE. INSTALLATION OF RESTRAINTS SHALL BE PER SMACNA PUBLICATION "SEISMIC RESTRAINT MANUAL, GUIDELINES FOR MECHANICAL SYSTEMS," SEISMIC HAZARD LEVEL(SH) SHALL BE "C" TABLE 7.4.
SEISMIC RESTRAINTS ARE NOT REQUIRED FOR ANY ONE OF THE FOLLOWING CONDITIONS:
A. PIPING SUSPENDED BY INDIVIDUAL HANGERS 12" OR LESS IN LENGTH FROM TOP OF THE PIPE TO THE SUPPORTING STRUCTURE.
B. PIPING IN BOILER AND MECHANICAL ROOMS SIZE LESS THAN 1 1/4" I.D.
C. PIPING IN OTHER AREAS SIZE LESS THAN 2 1/2" SIZE I.D.

NOTES:
1. WHEN INSTALLING NEW CONDENSATE LINES BENEATH FLOOR, FOLLOW ROUTING OF EXISTING LINES WHERE PRACTICAL.
2. WHEN CUTTING FLOOR, USE CARE NOT TO CUT CONDUIT WHICH MAY BE BURIED IN FLOOR.
3. FROM HUB BELOW GRADE RUN S.W.C.I. PIPING WITH ONE PIECE 10" BARREL UP COLUMN.
4. AT SUSPENDED UNITS, HOLD ALL CONDENSATE DRAIN LINES HIGH AS POSSIBLE. PROVIDED TRAP & C.O. AT EACH UNIT.
5. ALL NEW INDOOR CLEANOUTS SHALL HAVE N.B. TOPS.
6. PIPING 12" OUTSIDE BUILDING LINE PVC. PIPING BENEATH BUILDING CAST IRON (C.I.). PIPING INSIDE BUILDING ABOVE FLOOR C.I. OR CU.





PARTIAL FIRST FLOOR PLAN - LIGHTING
SCALE: 1/16" = 1'-0"

LIGHTING FIXTURE SCHEDULE
THE FOLLOWING FIXTURES OR SIMILAR FIXTURES SHALL BE FURNISHED TO CONTRACTOR BY MEMPHIS CITY SCHOOLS

TYPE "A"	SURFACE MOUNTED 1' X 8' FIXTURE WITH WRAP AROUND INJECTION MOLDED ACRYLIC LENS. HINGED FROM EITHER SIDE, (4) T-8 32 WATTS LAMPS & (1) 4-LAMP ELECTRONIC BALLAST.
TYPE "B"	SURFACE MOUNTED 1' X 4' FIXTURE WITH WRAP AROUND INJECTION MOLDED LENS, HINGED FROM EITHER SIDE, (2) T-8 32 WATTS LAMPS & (1) 2-LAMP ELECTRONIC BALLAST.
TYPE "C"	RECESSED 2' X 4' STATIC TROFFER FOR GRID MOUNTING WITH FLAT STEEL DOOR WITH SPRING LOADED LATCHES, ACRYLIC LENS (0.125" THICK), (4) T-8 32 WATTS LAMPS & (1) 4-LAMP ELECTRONIC BALLAST

LEGEND

[Symbol]	DENOTES 2'X4' LAY-IN FIXTURE
[Symbol]	DENOTES FLUORESCENT SUSPENDED FIXTURE
[Symbol]	DENOTES FLUORESCENT LAY-IN FIXTURE (L.I.)
[Symbol]	DENOTES FLUORESCENT SURFACE MOUNT FIXTURE (S.M.)
[Symbol]	POWER POLE
[Symbol]	EMERGENCY LIGHT
[Symbol]	SPEAKER
[Symbol]	THERMO DETECTOR
[Symbol]	EXIT LIGHT
[Symbol]	CLOCK
[Symbol]	DENOTES CEILING HEIGHT ACOUSTICAL TILE CEILING
[Symbol]	DENOTES CEILING HEIGHT GYPSUM BOARD CEILING

NOTES:

- UNLESS NOTED OTHERWISE (U.N.O.) LIGHT LAYOUT AND CEILING HEIGHTS SHOWN ARE PRESENT LAYOUT AND CEIL. HEIGHTS.
- WHEN CEILING TILE AND GRID ARE REMOVED THE LIGHT FIXTURES IN OR ON THE CEILING REMOVED SHALL ALSO BE REMOVED AND UNLESS U.N.O. BE REINSTALLED AFTER WORK ABOVE THE CEILING IS COMPLETE. REMOVE ALL FIXTURES EXCEPT IN CROSS HATCHED AREA. REINSTALLED LIGHT FIXTURES SHALL BE INSTALLED ACCORDING TO 94 SEISMIC CODE.
- WHEN CEILING ARE REMOVED, REMOVE ELECTRICAL DEVICES NOTED IN LEGEND. REINSTALL WHEN CEILINGS ARE INSTALLED. REMOVE ALL ELECTRICAL DEVICES IN CEILINGS EXCEPT IN CROSS HATCHED AREA. (SEE C-1, C-2)
- INSTALL COVER PLATE ON THERMOSTAT HAND-BOXES WHEN THERMOSTATS ARE REMOVED AND NO LONGER REQUIRED.

SEISMIC REQUIREMENTS:
INSTALL LIGHT FIXTURES TO MEET 1994 STANDARD BUILDING CODE & REQUIREMENTS OF LOCAL AUTHORITIES.

SYMBOL DESCRIPTION:

- [Symbol] REPLACE EXISTING SUSPENDED FIXTURES WITH NEW SURFACE FIXTURES SIMILAR TO TYPE "A" & "B" FIXTURES. CONNECT TO EXISTING CKTS.
- [Symbol] INDICATES QUANTITY OF EACH TYPE
- [Symbol] REPLACE EXISTING SUSPENDED FIXTURES WITH (25) FIXTURES SIMILAR TO TYPE "C" FIXTURES. MODIFY EXISTING BRANCH CKT WIRING AS REQ'D TO CONNECT NEW FIXTURES. MAINTAIN SAME SWITCHING ARRANGEMENT. SEE NEW LAYOUT ON SHEET C-3.
- [Symbol] REPLACE EXISTING FIXTURES WITH (3) FIXTURES SIMILAR TO TYPE "C" FIXTURES (2X4) 4-LAMP TROFFER. CONNECT TO EXISTING CKTS. SEE NEW LAYOUT ON SHEET C-3.
- [Symbol] RELOCATE EXISTING FIXTURES IN NEW CEILING LAYOUT SHOWN ON SHEET C-3.
- [Symbol] REPLACE EXISTING FIXTURES WITH 1X4 LAY-IN FIXTURES REMOVED FROM ROOM 121 A,B,C,D OR E. SEE NEW CEILING LAYOUT ON SHEET C-3
- [Symbol] REPLACE EXISTING FIXTURES WITH TYPE "C" FIXTURES (2X4) 4-LAMP TROFFER AND CONNECT TO EXIST. CKT. SEE NEW CEILING LAYOUT ON SHEET C-3
- [Symbol] CEILING TO BE RAISED OR LOWERED IN THIS ROOM. REVISE ELECTRICAL ACCORDINGLY.
- [Symbol] INDICATES NEW CEILING HEIGHT
- [Symbol] IN LIBRARY, CEILING WILL BE LOWERED TO 10'-0" AFF SOUTH OF THIS LINE, LOWER FIXTURES THIS AREA.
- [Symbol] REPLACE THIS FIXTURE WITH A 1'X4' LAY IN FIXTURE REMOVED FROM ONE OF THE FOLLOWING OFFICES 121 A, B, C, D OR E.
- [Symbol] MOVE S.M. 1'X4 LIGHT FIXTURE APPROX. 2' TO CLEAR HVAC & PLUMBING PIPING.
- [Symbol] LOWER WALL MOUNTED FLUOR. LIGHT FIXTURE IN STORAGE ROOM REFLUG INTO EXIST. RECEIPT.

